

Northern New Mexico College



2013 Fact Book

Carmella Sanchez
Institutional Research

Northern New Mexico College is proud to present its fourth annual Fact Book publication. This document was initiated by the Registrar's Office and compiled by the Office of Institutional Research. It contains profiles on student enrollment, degree offerings, financial data, and employees. The data in this publication is compiled using the most recent academic school year (fall, spring, and summer terms) and the most recent fall census report. All data is collected and maintained using Banner. The Registrar's office provides extensive data verification and training to ensure that data is as consistent as possible.

The intent of this publication is to provide an accurate and consistent reference for use by various internal and external stakeholders. This effort intends to not only provide quick and easy access to institutional data but also to open-up new ideas and questions.

If you have questions or comments regarding this publication, please feel free to contact us at registrar@nmmc.edu or Carmella@nmmc.edu.

Thank you



VISION

Northern New Mexico College is a Hispanic- and Native American-serving comprehensive institution that will be recognized nationally for cultural sustainability, quality student learning and developing economically strong communities among diverse populations.

MISSION

The mission of Northern New Mexico College is to ensure student success by providing access to affordable, community-based learning opportunities that meet the educational, cultural, and economic needs of the region.

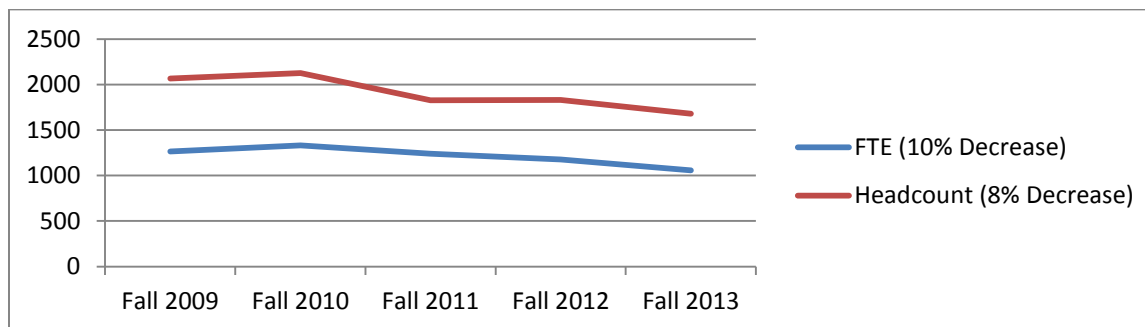
Table of Contents

<i>Student Enrollment</i>	<i>4</i>
<i>Employees</i>	<i>4</i>
<i>Budget</i>	<i>5</i>
<i>Community Service</i>	<i>6</i>
<i>Credit Enrollment</i>	<i>7</i>
<i>Enrollment Trends</i>	<i>8</i>
<i>Characteristics of Students</i>	<i>8</i>
<i>Residency</i>	<i>10</i>
<i>High School Recruitment</i>	<i>10</i>
<i>Degree Offerings</i>	<i>11</i>



Student Enrollment

Source: Fall 3rd Week Enrollment Registrar's Report



Employees

IPEDS: 2012-13 Human Resources Report (to be updated April 2014)

	Full-Time Faculty Fall 12	Part-Time Faculty Fall 12
White	21	48
Black	1	1
Hispanic	30	40
American Indian	0	5
Asian	2	0
Non-Resident Alien	0	0
Unknown/Other	3	5
Total	57	100

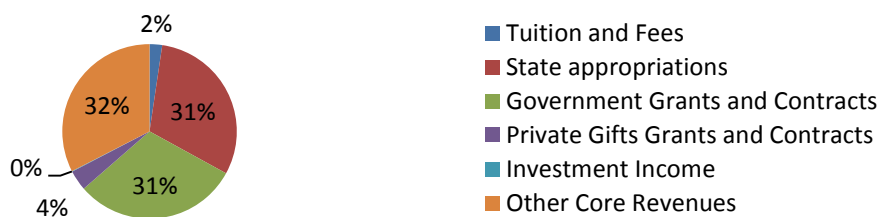
IPEDS: 2012-13 Human Resources Report (to be updated April 2014)

	Full-Time Staff (Fall 2012)	Part-Time Staff (Fall 2012)
Administration	39	1
Staff	123	24

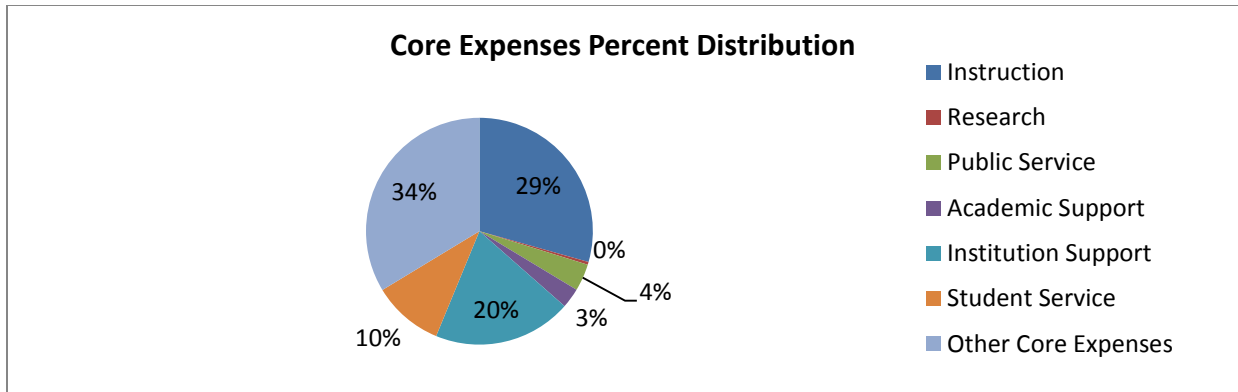
Budget (Source: IPEDS: 2012-13 Finance Report on FY 11)

Core Revenues (to be updated 4/2014)	Total	Per FTE Enrollment
Tuition and Fees	\$779,098	\$578
State appropriations	\$10,239,240	\$7,590
Government Grants and Contracts	\$10,227,192	\$7,581
Private Gifts Grants and Contracts	\$1,258,300	\$933
Investment Income	(\$32,876)	(\$24)
Other Core Revenues	\$10,868,397	\$8,057

Core Revenues Percent Distribution



Core Expenses (to be updated 4/2014)	Total	Per FTE Enrollment
Instruction	\$8,589,444	\$6,367
Research	116028	86
Public Service	\$1,127,106	\$836
Academic Support	\$834,741	\$619
Student Service	\$5,771,671	\$4,278
Institution Support	\$2,953,031	\$2,189
Other Core Expenses	\$9,844,204	\$7,297

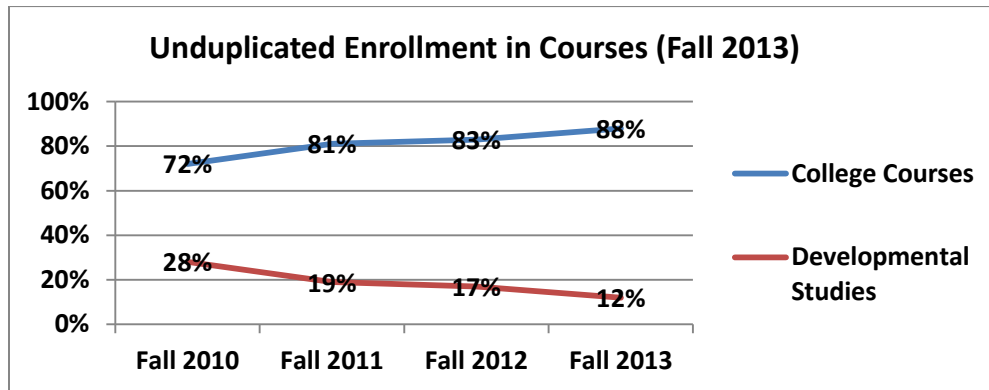


Community Service Offerings and Projects

Based on 2012-13 data, the list below provides information on community service course offerings and enrollments. There is also information on special community projects and events with numbers of participants.

Sampling of Offerings	Number of participants - unduplicated	Sampling of Special Projects for the Community
ABE	252	Assist adults in becoming more literate and improving their educational and employability skills
Continuing Education	489 (duplicated)	NNMC Continuing Education offers personal enrichment courses each semester. These numbers reflect CE/CS course enrollments between January 2013 and November 2013. Courses include: Shotokan Karate, Arc View GIS, Computer Literacy, Defensive Driving, Zumba, Yoga, Grant Writing, Heritage Arts, CDL Preparation, Commercial Kitchen Food Safety & Sanitation Course
Kids College	18	Provides a variety of educational options to parents in performing arts and other activities such as health, and life sciences for students. The program was established to provide activities similar to NYSP for students who are not eligible to participate.
NYSP	237	The (NYSP) Northern Youth Sports Program this summer had an average daily attendance of 237 participants between the ages of 8 and 15 years old. The NYSP is a fitness program that includes 1 hour of Enrichment per age group. Enrichment is an educational period that involves guest speakers such as Law Enforcement and the Fire Department. The program provides a well-balanced breakfast and lunch for all participants as well as transportation. The NYSP program offers kids the chance to meet new friends and get fit.
SBDC	3000+ (duplicated)	The NNMC SBDC is a Global, National, and Local business resource. During fiscal year 2012/13, the NNMC SBDC served 132 individual clients, conducted 29 training events to 354 attendees. The SBDC provides economic outreach presentations to the community and assists in the establishment businesses.

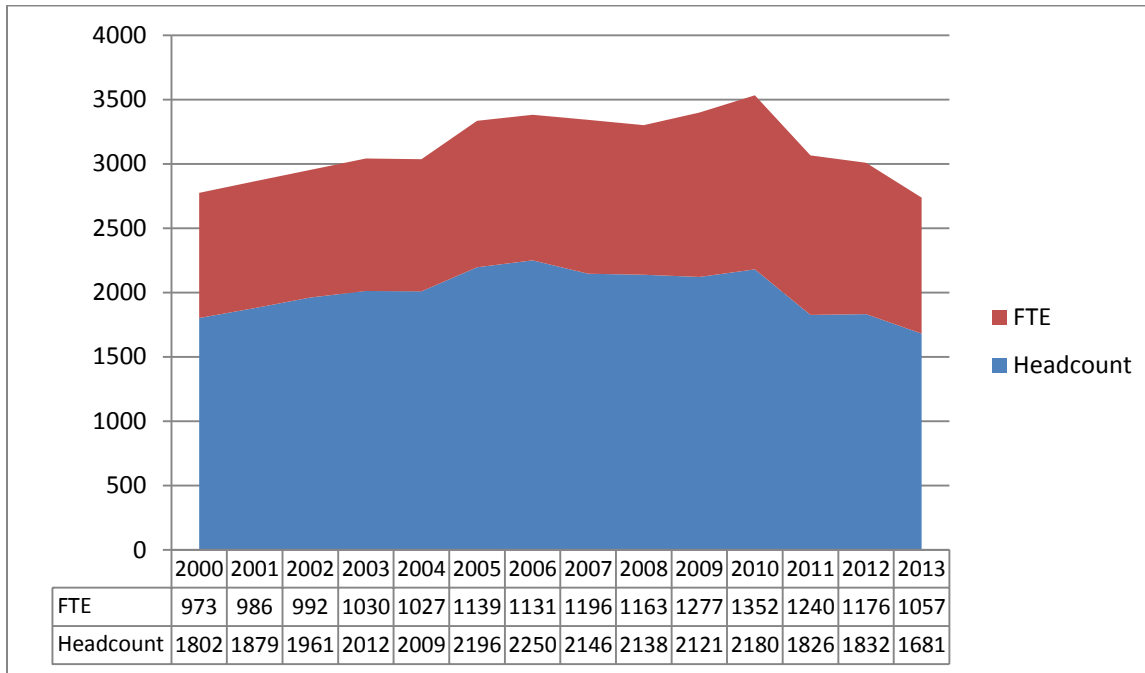
Credit Enrollment



	Credit Enrollment Fall 2013	
Credit Students	1681	Student Headcount
	15,848	Student Credit Hours (SCH)
	1057	Full-Time Equivalent (FTE) Students
	57%	Female Students
	43%	Male Students
	13%	Native American
	68%	Hispanic
	11%	White
	8%	Other
	49%	Full-Time Students (12 or more credit hours)
	51%	Part-Time Students (less that 12 credit hours)
	49%	Students with Academic Majors
	21%	Students with Career Technical Majors
	30%	Students Undecided (includes Dual Credit)
	934	Eligible Students Receiving Financial Aid
	10:1	Student/Faculty Ratio
11:1 (Lower Division) 7:1(Upper Division)	Average Class Size	
56	Web-Based/ITV Distance Ed. Classes (Fall 2013)	
459	Traditional Classes (Fall 2013)	

Enrollment Trends

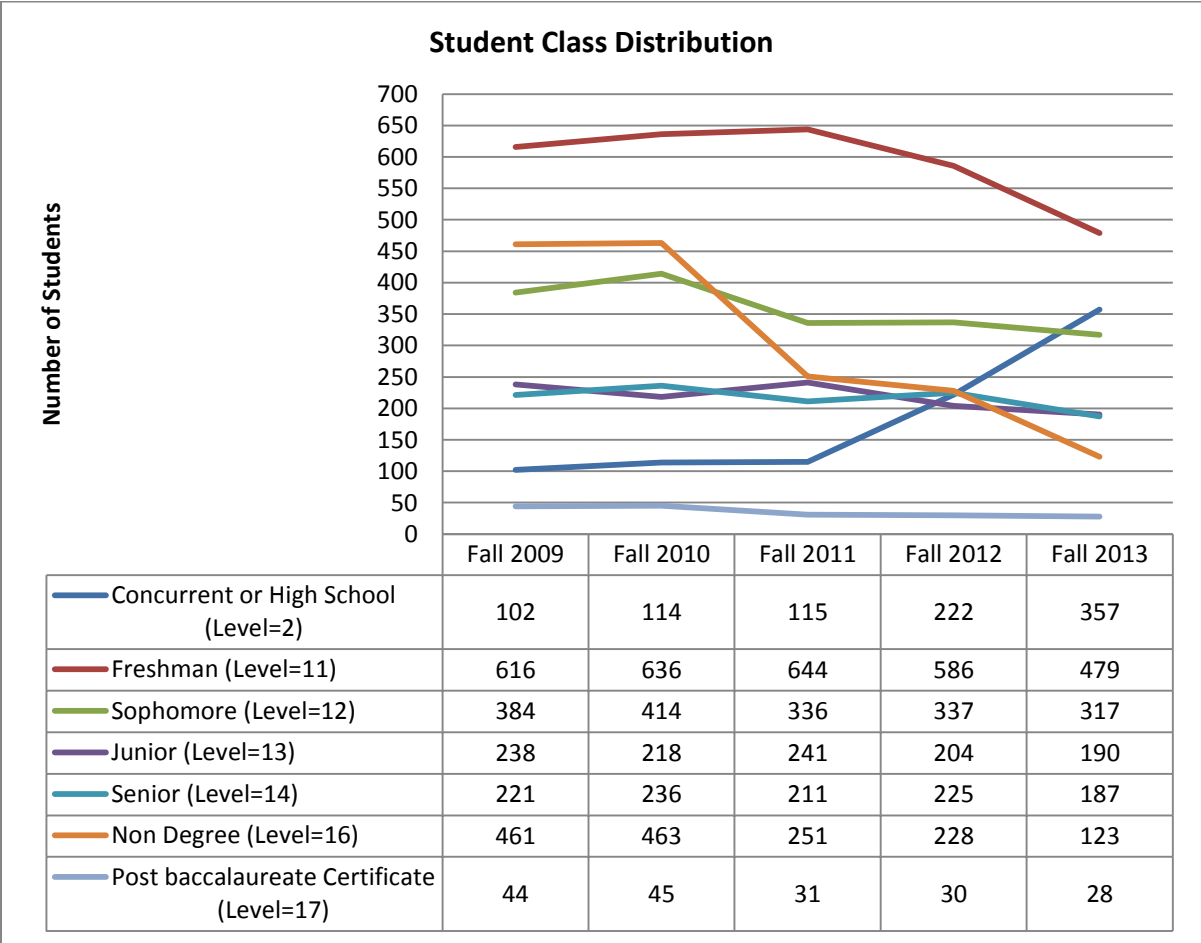
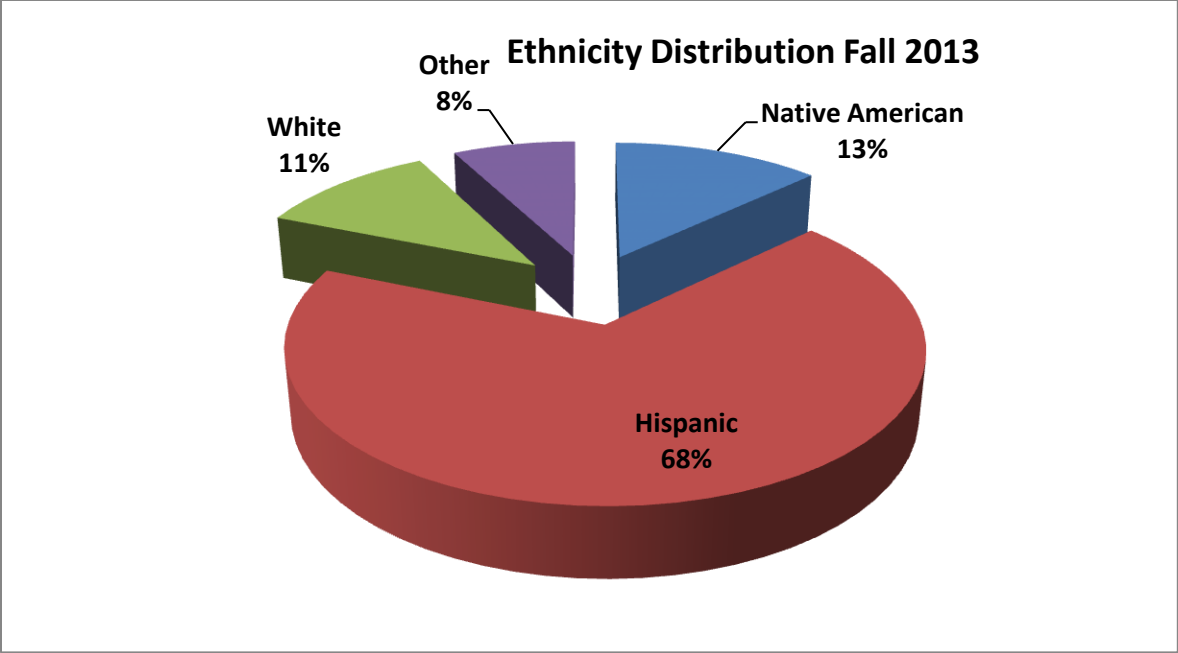
The headcount shown is the number of students at the end of the fall semester. The 2013 fall semester is only an estimate because this document was developed before the end of the semester. The full-time equivalent (FTE) is computed by taking the total number of credit hours that students are enrolled in during the semester and dividing by 15.



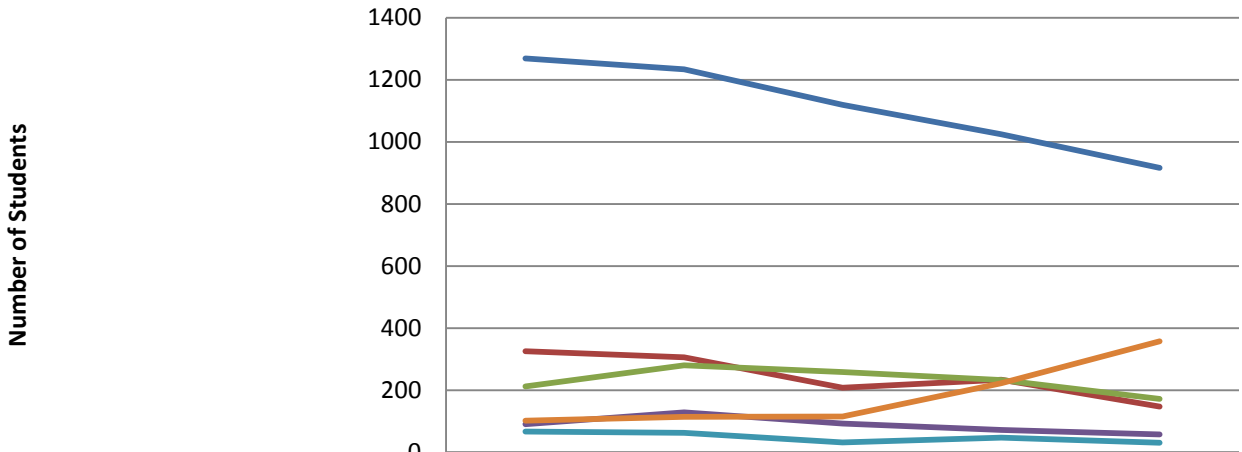
Fact	Percent
Cumulative Fall Headcount Growth Since 2000	4%
Average Fall Headcount Growth Since 2000	0%

Characteristics of Students

Age	Fall 2013	Percent
18 or younger	273	16%
18 to 24	761	45%
25 to 30	239	14%
31 to 35	104	6%
36 to 40	75	4.5%
41 to 45	75	4.5%
46 to 50	46	3%
51 to 55	49	3%
56 to 64	31	2%
65 and older	28	2%



Student Admission Type



	Fall 2009	Fall 2010	Fall 2011	Fall 2012	Fall 2013
Continuing Student (Admit=1)	1269	1234	1119	1024	916
Returning Student (Admit=2)	326	306	208	234	147
New Student (Admit=3)	212	280	259	233	172
In State Transfer Student (Admit=6)	90	129	93	72	58
Out of State Transfer Student (Admit=7)	67	63	32	47	31
Concurrent Enrollment (Admit=9)	102	114	115	222	357

Residency

Student Residence	Fall 2011	Fall 2012	Fall 2013
Arizona	6	5	3
California	9	7	6
Colorado	2	5	2
Indiana	1	1	1
New Mexico	1797	1791	1645
Oregon	0	1	1
South Dakota	0	1	1
Texas	7	7	10
Utah	0	5	3
Other	4	9	9

NM Residents	Fall 2011	Fall 2012	Fall 2013
Bernalillo	25	31	39
Colfax	0	1	1
Curry	1	0	1
Dona Ana	2	2	3
Lincoln	0	1	1
Los Alamos	82	82	73
McKinley	5	4	7
Mora	3	6	1
Otero	1	2	1
Rio Arriba	1148	1191	1101
San Juan	12	12	37
San Miguel	4	2	0
Sandoval	3	5	5
Santa Fe	369	325	273
Taos	133	120	88
Valencia	0	1	3
No Response/Other	9	6	11

High School Recruitment

High School where New Student Graduated From:

	Fall 2011	Fall 2012	Fall 2013
Capital High	1	3	3
Coronado HS	9	1	4
Escalante	3	0	2
EVHS	84	90	36
GED	47	32	34
Los Alamos	6	6	5
McCurdy HS	9	2	3
Mesa Vista	4	11	3
Other NM HS	17	21	25
Out of Country/Unknown	4	5	2
Out of State	13	13	9
Penasco	7	6	8
Pojoaque	36	23	25
Questa	3	0	0
Santa Fe High School	7	7	4
Santa Fe Indian School	4	9	6
Victory Faith Christian Academy	5	4	3
Total Number of New Students	259	233	172

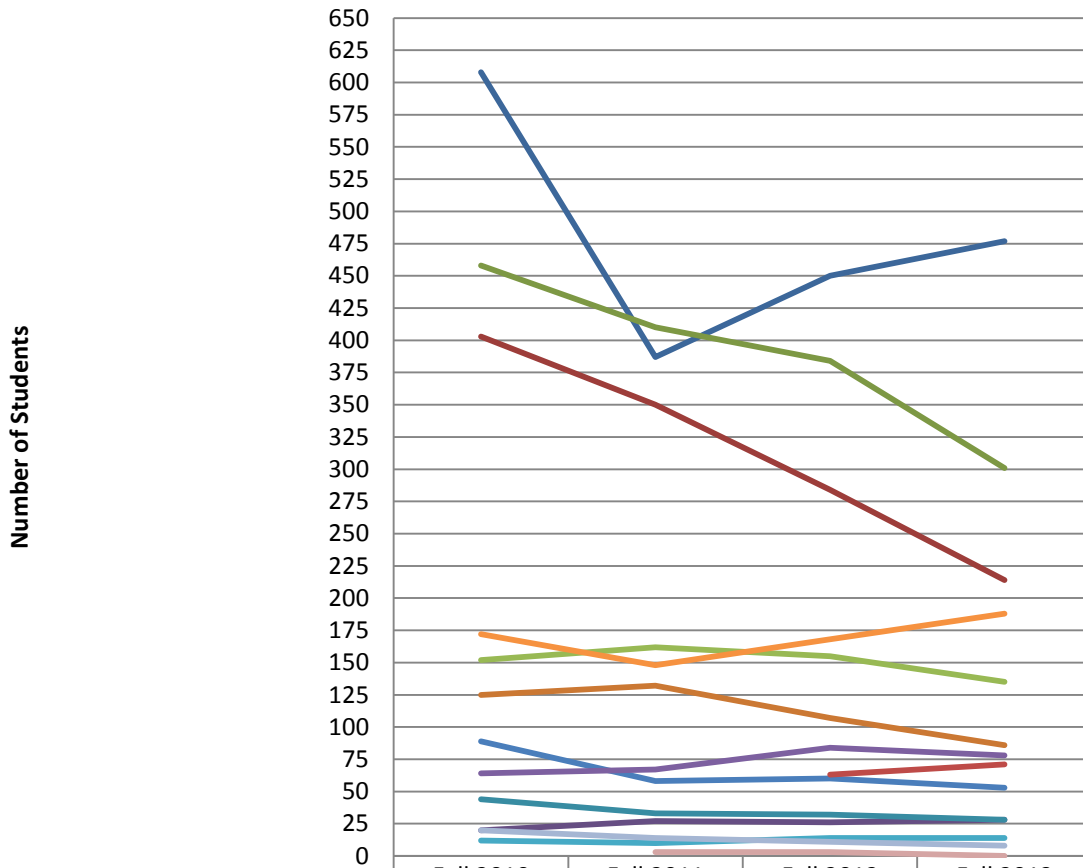
Degrees and Majors

Top 25 Majors Declared Fall Term

Major	2012	2013	Major	2012	2013
Non-Degree	468	477	Cosmetology	34	38
Business Administration	125	107	Criminal Justice	39	35
Nursing (ADN) AS*	91	76	Mechanical Engineering	31	30
RN to BSN*	47	66	Accounting	20	24
Environmental Science	56	60	Early Childhood Education	21	23
Elementary Education	77	58	Human Services - Social Science	13	20
Biology	59	57	Automotive Technology	22	19
Psychology	46	55	Music	12	17
Information Engineering Tech	53	54	Auto Body Repair	18	16
Nursing (ADN)	68	54	Massage Therapy	22	16
General Studies	84	53	ALT Secondary(7-12)	17	15
Radiologic Technology*	77	50	Software Engineering	19	15
Business Administration	43	38			

*These degrees contain students who intend to or are applying to these programs.

Student Declared Degrees



	Fall 2010	Fall 2011	Fall 2012	Fall 2013
Non Degree	608	387	450	477
Associate of Arts	403	350	284	214
Associate of Applied Science	458	410	384	301
Associate of Engineering	20	27	26	28
Alternative Licensure	44	33	32	28
Associate of Science	125	132	107	86
Bachelor of Arts	89	58	60	53
Bachelor of Arts in Integrated Studies			63	71
Bachelor Business Administration	152	162	155	135
Bachelor of Engineering	64	67	84	78
Bachelor of Music	12	10	14	14
Bachelor of Science	172	148	168	188
Certificate	20	14	11	8
Graduate Certificate		3	3	0